

**PERFECTION UNIFORMS**

# **EclipseSeries™**

**Performance Synthetics**



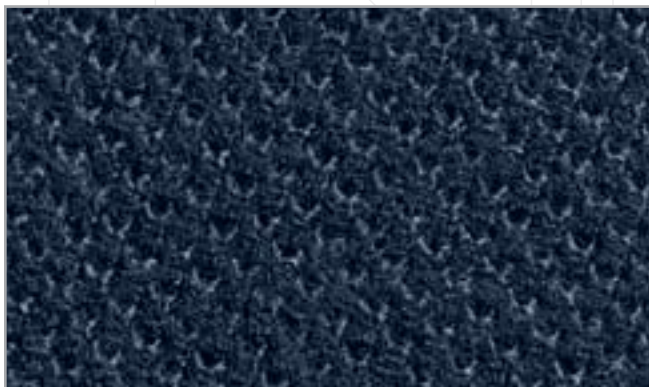
***Performance Knits***

## Redefining Fabric Performance...

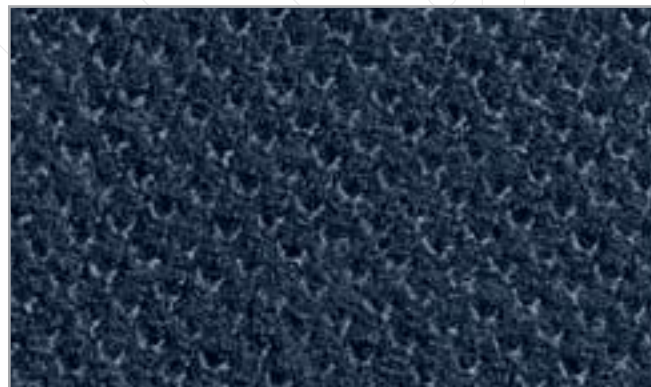
Featuring Perfection X-Factor Knit Fabric Technologies™

The Ultimate in High Performance Knit Fabric from Russell Mills, the leader in athletic performance wear:

- The Ultimate in Comfort, with an **AeroPique** (8 oz) open tuck stitch configuration that maximizes air porosity with excellent coverage, hand, and resiliency.
- The Ultimate in Performance, with **Russell synthetic fiber technology** that imparts a natural feel with synthetic performance, wicking moisture away from the skin, for quick evaporation and cooler, drier comfort.
- The Ultimate in Image, with a permanent deep dye **ColorStay** process that maintains color depth and retention, as well as **TrueSize** attributes that minimize shrinkage and maintain fabric smoothness.
- The Ultimate in Freshness, with **Microban™** antimicrobial protection that keeps the fabric smelling fresh all day long.



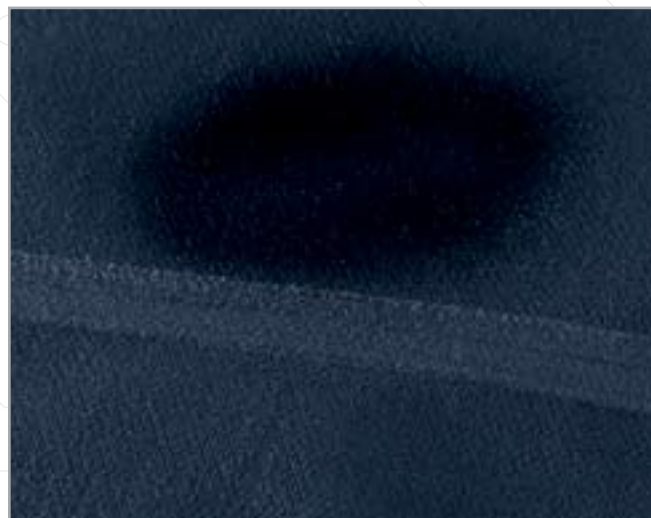
**EclipseSeries™** AeroPique – **NEW**



**EclipseSeries™** AeroPique – after **25** Washes



**Corded Rib Knit Trim** – Maintains smoothness and stability  
**Melamine Buttons** – Maintains image



**Instant Wicking Performance** – Maintains comfort



# PERFECTION EGC SYSTEM™

## ERGONOMIC GARMENT CONSTRUCTION

### **Redefining Design & Construction Performance...**

The Ultimate in High Performance Polo Shirts, featuring the Perfection EGC System™ (Ergonomic Garment Construction™) providing enhanced comfort, service, mobility, and extended wear life:

- EGC System™ Gusseted Underarm Construction, running the entire length of the sleeve and body.
- Corded rib knit trim, for added smoothness and stability.
- Placket mic-clip accommodation on both models.
- Stabilized Wing Epaulets (*Pat. Pending*) with mic-clip accommodations on *ImageUtilities* model.
- Functional Melamine button through pockets with pen slots on *ImageUtilities* model.
- Generous sizing, for body armor use, as appropriate.



EGC Underarm Gusset Construction



**ImageCasuals**

Short Sleeve Model 2100/L2100



**ImageUtilities**

Short Sleeve Model 2120/L2120



Stabilized Wing Epaulets (*Patent pending*)

# EclipseSeries™

## Performance Synthetics

### *EclipseSeries™ Performance Knits Lot Detail*

#### **SHIRTS**

ImageCasuals- Traditional polo style w/ EGC Gusset

STYLE	MEN'S	WOMEN'S	COLORS
Long Sleeve Model	2100	L2100	Black, Blue, Dk. Navy, Silver Tan, White, Red

ImageUtilities- Polo style w/EGC, Pockets, Stabilized Wing Epaulets

STYLE	MEN'S	WOMEN'S	COLORS
Short Sleeve Model	2120	L2120	Black, Blue, Dk. Navy, White

Custom Programs Available

